



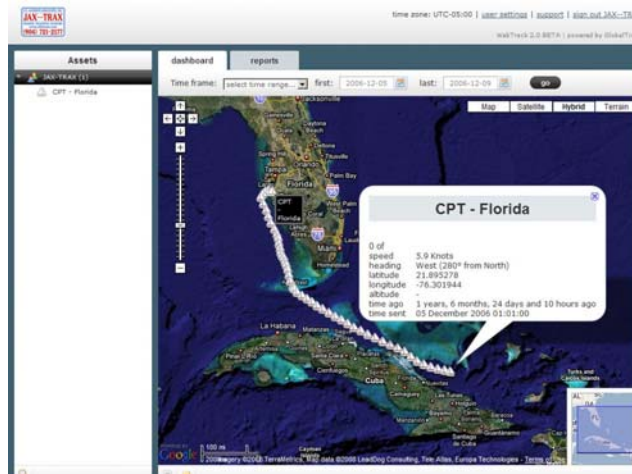
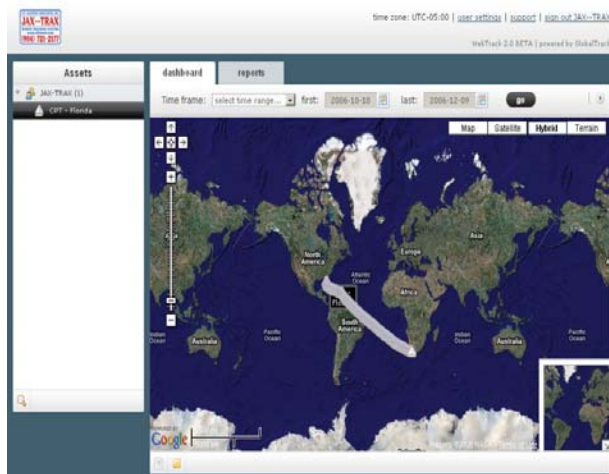
J.N. Allinson Associates, Inc.
222 University Blvd. N. #2
Jacksonville, FL 32211-7534

June 2008 for Immediate Release:

Boat Owners ... **starting at \$12/month*** ... remotely track the location of your vessel through a secure internet Website

On any given day best practices for "boating safety measures" require you to communicate your boat's position to people not onboard. Usually this happens by reporting information over a VHF radio, a cell phone or a Single Side Band Marine radio. It requires that a person onboard to use GPS (or like equipment) to "transmit" information such as coordinates, direction and speed. When this information is "received" it is plotted on a chart.

Now there is a better way! This "attended and manual activity" is now "automated" using GlobalTrack products distributed through J.N. ALLINSON ASSOCIATES, INC. JAX--TRAX. A combination "transceiver" (figure on right) installed on your boat communicates information to a secure Website through a worldwide network of geostationary satellites (INMARSAT). Installation of this device can either be in plain view or hidden. Once the "transceiver" is activated it can be remotely controlled to communicate information which is then displayed on maps at a secure Website (see example below).



JAX--TRAX is your distributor for GlobalTrack products.

For a demonstration, pricing and ordering;
contact details are:

Email: jax--trax@allinson.com
Facsimile: 954-337-0550

John (JACK) N. Allinson II
J.N. ALLINSON ASSOCIATES, INC.
222 UNIVERSITY BLVD N #2
JACKSONVILLE, FLORIDA 32211-7534
Telephone: 904-721-2177
Website: www.allinson.com

***Requires purchase or lease of a "transceiver" from J.N. Allinson Associates, Inc. JAX--TRAX**